

## SS-129-TO / SS-129-TC REMOTE SWITCH PLATE

### FEATURES:

- Attractive, high security stainless steel plate.
- Easy installation and wiring.
- Built-in Tamper Switch gives complete security.
- Two LEDs for zone status indicator, and system ON indicator.
- D-type mounting hole for Key Lock Switches.



### FEATURES:

- Attractive, high security stainless steel plate.
- Easy installation and wiring.
- Built-in Tamper Switch gives complete security.
- Two LEDs for zone status indicator, and system ON indicator.
- D-type mounting hole for Key Lock Switches.

### SPECIFICATIONS:

Tamper Circuit: **SS-129-TO**, for Normally-Open circuit.

**SS-129-TC**, for Normally-Close circuit.

Contact: silver plate.

Rating: 1A at 50VDC.

LED Rating: 10mA at 12VDC.

Face Plate: stainless steel.

Size: 4 1/2" (L) x 1 1/2" (W) x 1 1/4" (H).

Weight: 0.22 lb.

### INTRODUCTION:

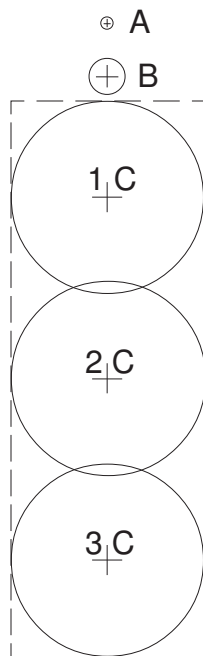
The **SS-129 Remote Switch Plate** is used to make ordinary shunt/momentary key lock installations look more attractive and provide greater protection for the outside key lock. Any **SS-090** Shunt Key Lock or **SS-095** Momentary Key Lock may be mounted onto the Remote Switch Plate. A built-in tamper switch for the protective circuit will trigger the alarm immediately if an attempt is made to remove the face plate while the security system is ON. Those two LEDs can be wired into the security system to indicate the zone status and the security system armed/disarmed status individually.

## INSTALLATION INSTRUCTIONS:

1. Using template at right, drill out all holes at a convenient location near the entrance to the premises. Then cut a rectangular hole as indicated by the dotted line.
2. Mount Key Lock Switch (SS-090 Shunt or SS-095 Momentary) on inner plate. Then carefully solder control wires as indicated in one of the diagrams shown below.
3. Mount inner plate assembly to wall surface, using the two wood screws provided, in hole "A".
4. Attach the face plate to the mounted inner plate with the machine screws provided.

**NOTE:** The **SS-129-TO** tamper switch must be used in a normally open (N.O.) alarm circuit loop, the **SS-129-TC** in normally closed (N.C.) loop.

## DRILLING TEMPLATE (Actual Size)



HOLE DIAMETERS:

"A" - 1/16 INCH

"B" - 3/16 INCH

"C" - 1 INCH



A

