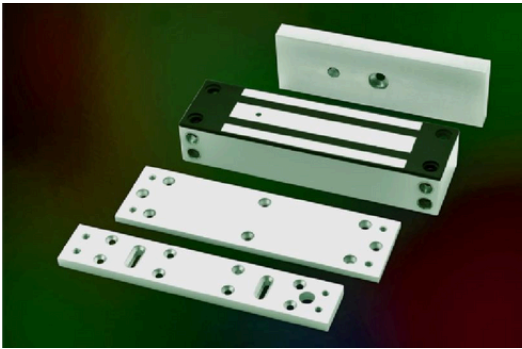


## EXT545-SL

### 1200lbs Outdoor EM Lock



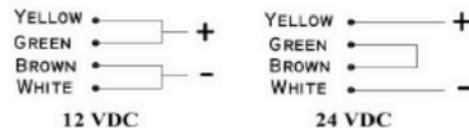
1200lbs Water Proof EM locks were designed as such to be unaffected / resisting the ingress of water under specified condition with its fully sealed electronics incased with stainless steel. Suitable for outdoor application and harsh climate.

- ☐ Life Safety Applications
- ☐ No Residual
- ☐ Low Energy Consumption
- ☐ 12/24V Selectable
- ☐ Fully Sealed Electronics
- ☐ CE Compliance

#### Wiring Instruction Diagram EXT

### WIRING INSTRUCTIONS

**IMPORTANT!**  
Before the power supply is switched on,  
set the wiring correctly.



#### REED SENSOR CONTACT

GRAY ———> NC  
BLUE ———> NO  
PINK ———> COM

#### Specifications

- Magnet Size: 222 x 62 x 42 mm
- Armature Size: 185 x 61 x 16.5 mm
- Holding Force: up to 1200lbs
- Current Drain: 420mA +10%/12Vdc / 210mA +10%/24Vdc
- Temperature: (-10 to 55)°C (14 to 131)°F
- Weight: 5.26kg