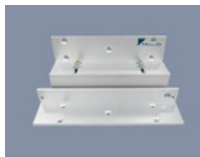


ASC-1200iD

1200Lbs Double EM Locks w/LED



ASC-1200iD - 1200Lbs Double EM locks w/LED, 12/24V, Nickel Plated



ZL-545- Mounting bracket for InSwing door



U-545- Mounting bracket for glass door- U Channel



Standard Features



Life Safety Applications



No Residual



Low Energy Consumption



Cost Savings



12/24V Selectable



Door Status Monitoring

Extended Features

Lock Status Monitoring
Electroless Nickel (EN) Plated Armature Plate
Anodized Aluminum Housing
CE Compliance

Specifications

- Magnet size: 532x 67x 40 mm
- Armature size: 185x 61x 16.5mm
- Holding force: upto 1200lbs x 2
- Current drain: 420mA +10%/12Vdc/210mA+10%24 Vdc
- Temperature: (-10to55)°C (14 to131)°F
- Weight: 9.3kg

Wiring Diagram

